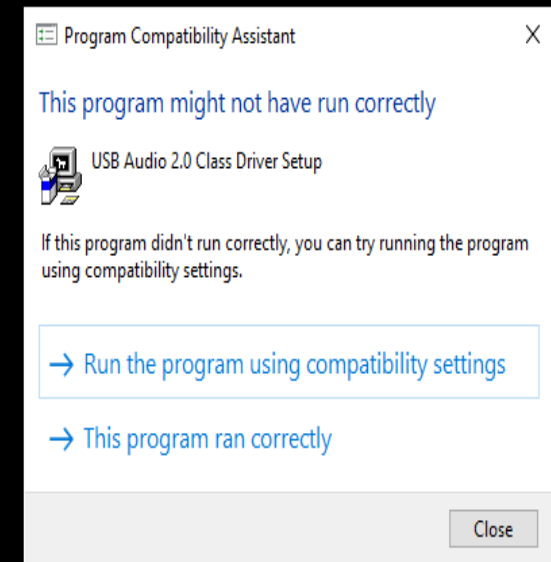
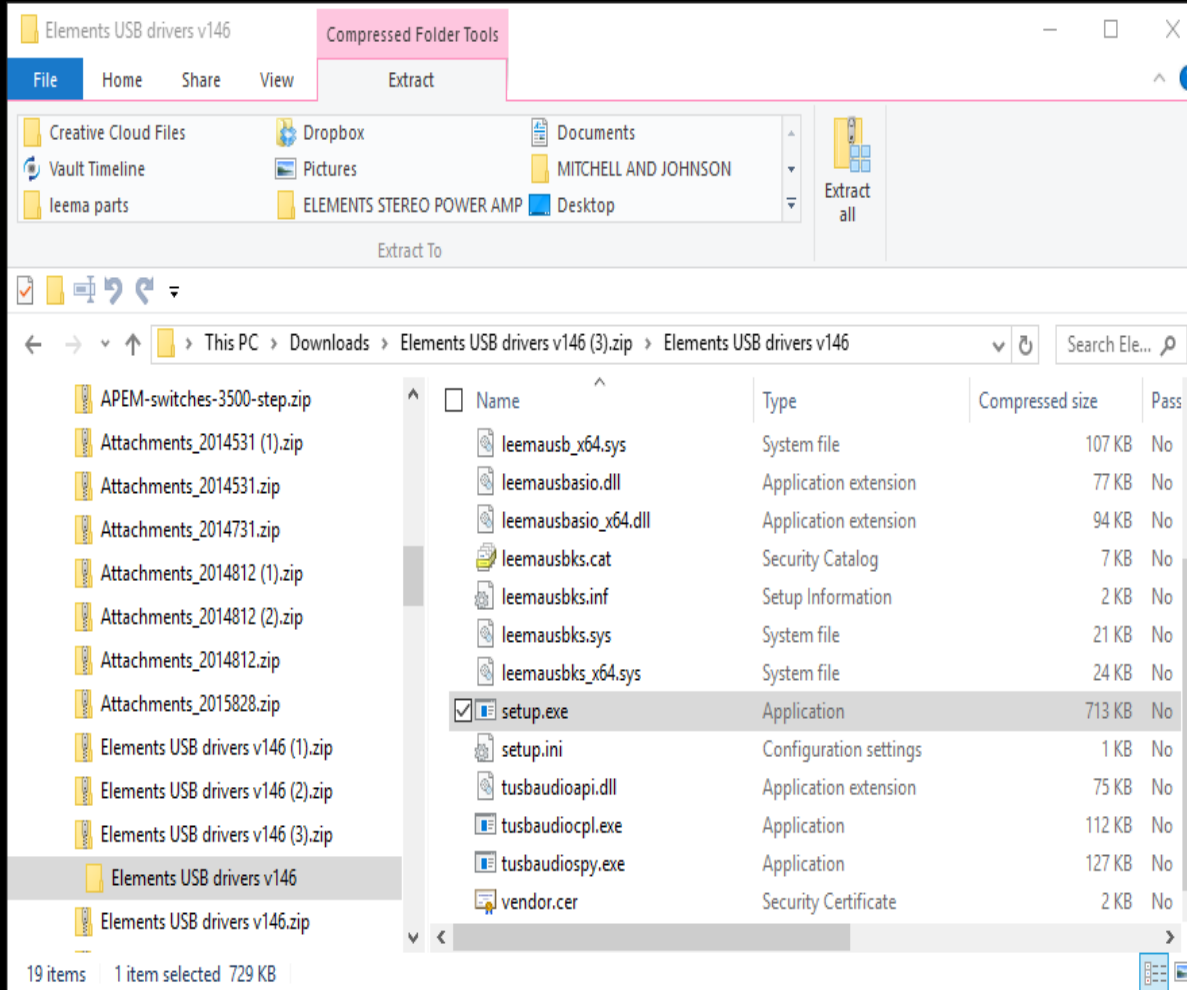


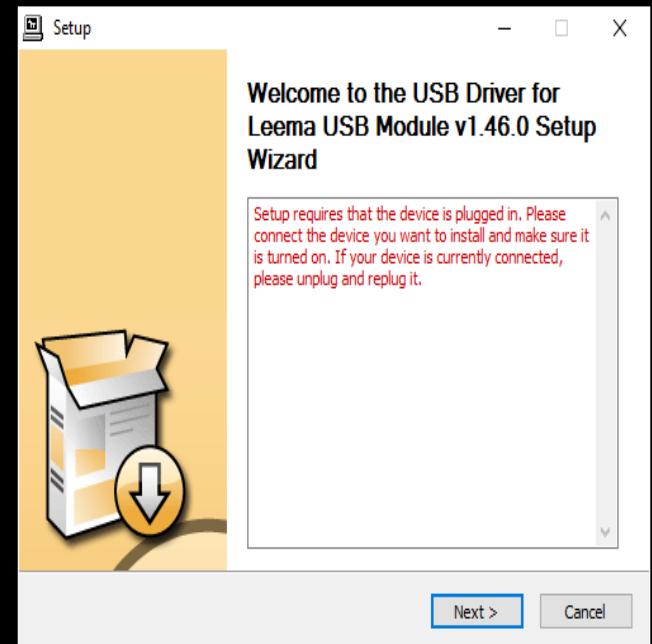
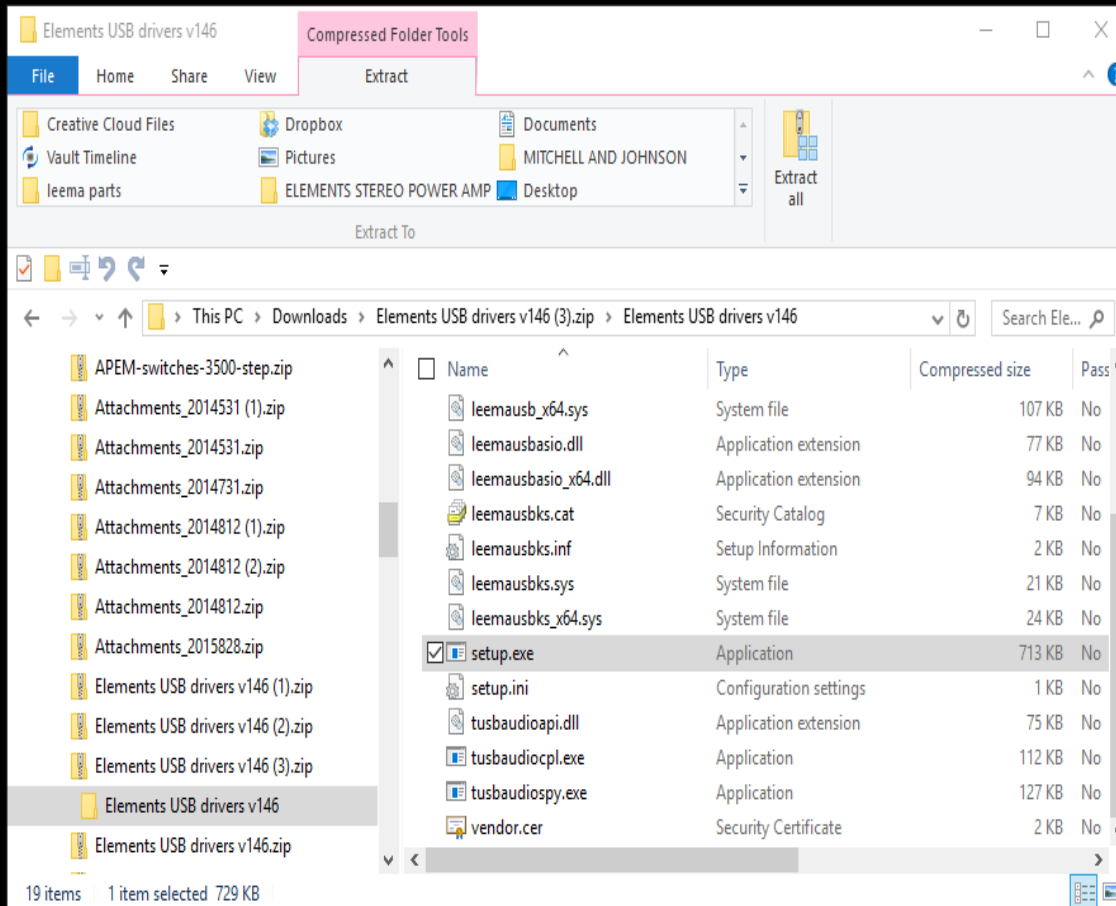
If the Windows 10 installation is an upgrade and the Leema Driver was already installed then it should still function correctly.

For a new installation under Windows 10, please follow the following instructions. The Leema product **MUST** be plugged in and switched on during this process.

1. Download the Leema USB driver from the Leema website. This should be copied to your Downloads folder automatically.
2. Open the Elements USB driver v1.46 folder. The contents are compressed, so select “Extract all” in the tool bar.
3. Locate the unzipped “Setup.exe” file and double click on it to start the installation.
4. The program compatibility assistant will open automatically as shown below. Select “Run the program using compatibility settings”.

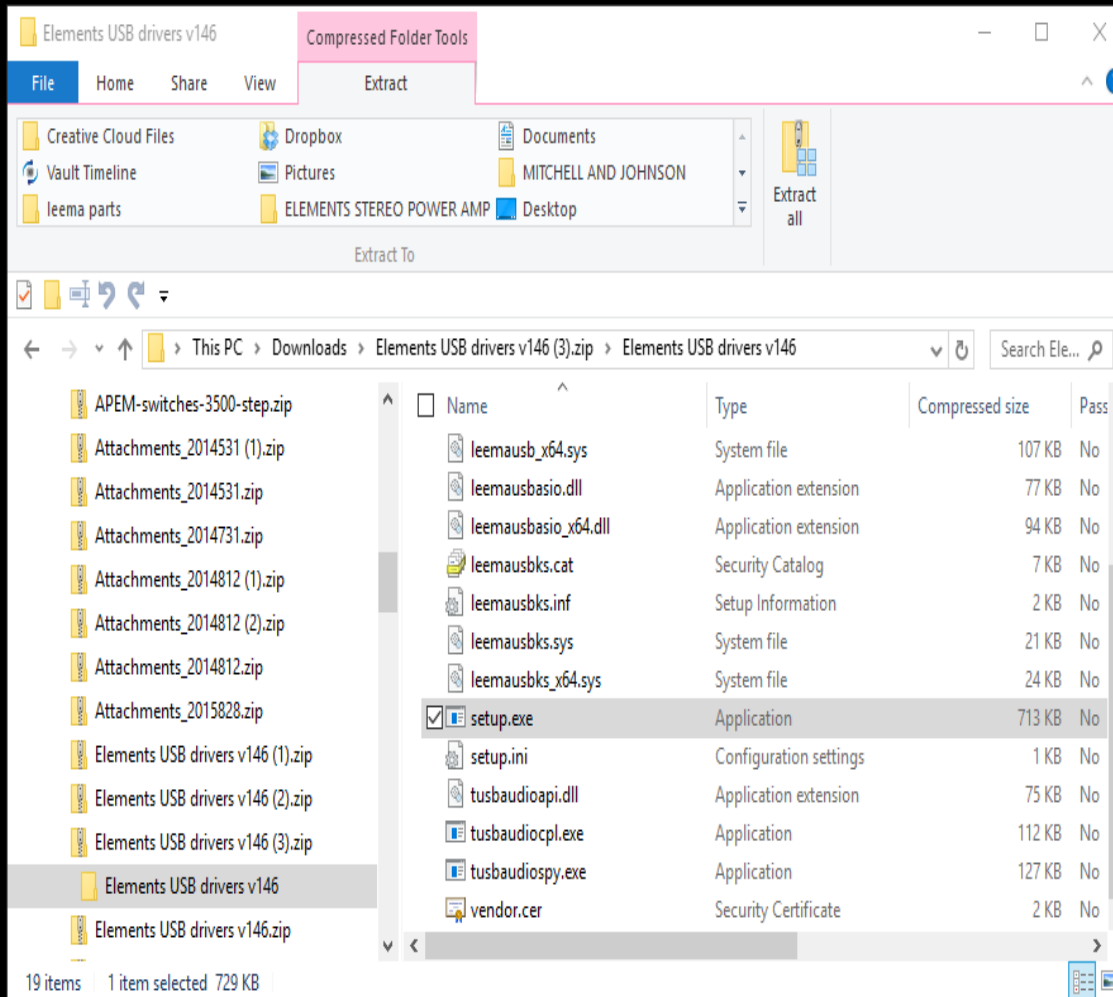


5. If the Leema product is not plugged in or powered, a warning box will open to remind you. Once connection is completed, press “Next”. Otherwise, continue to next page of this guide.



6. A Setup window will open asking what file location you would like the driver to be installed to. We suggest that the automatically generated folder offered is used.

7. Press "Install".

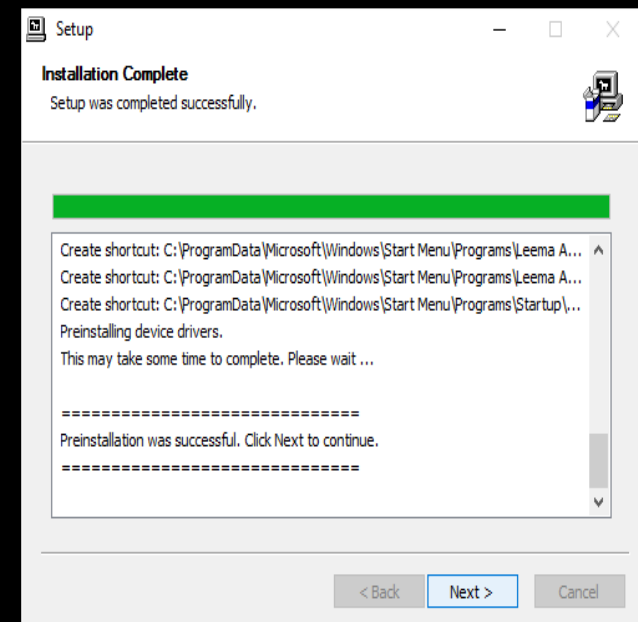
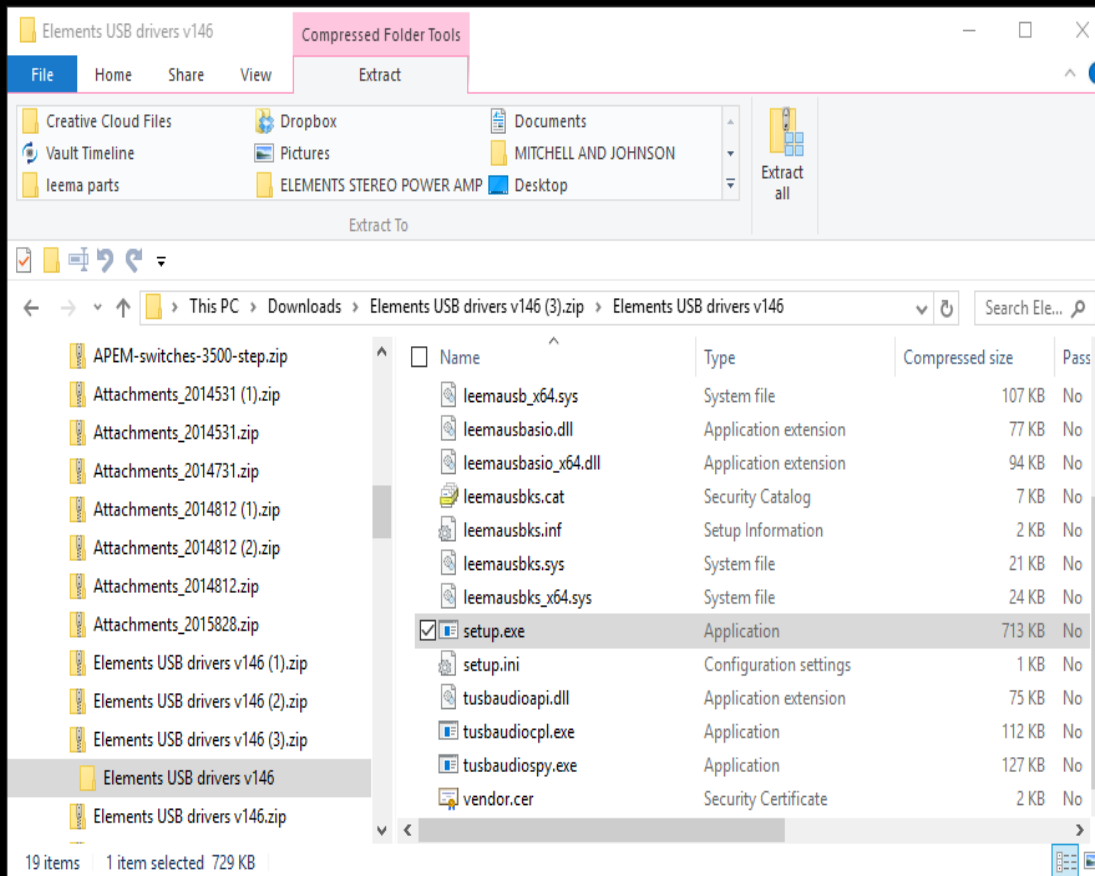


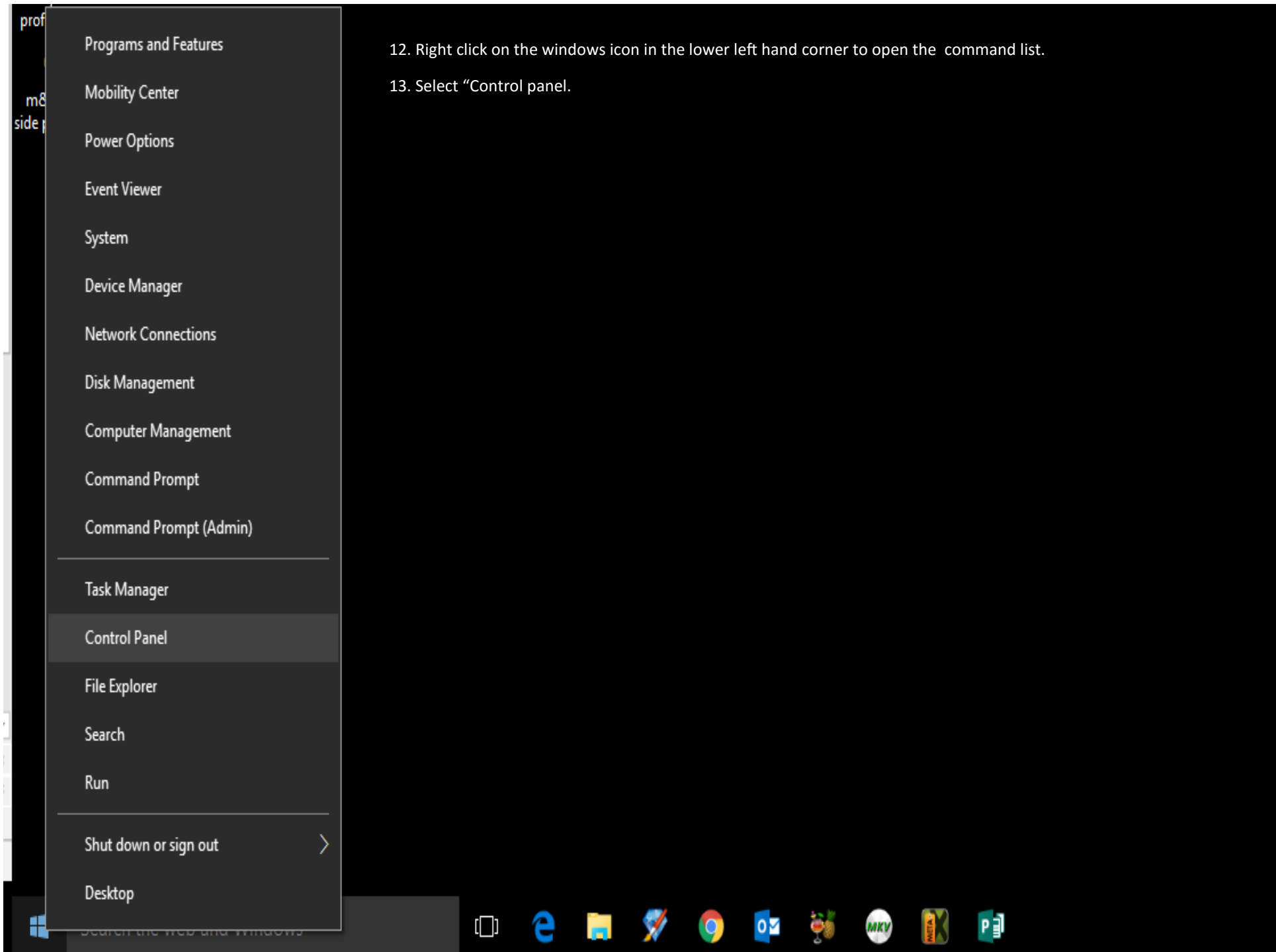
8. Once the installation is complete, you should see an “Installation complete” message as shown below.

9. Press “Next”.

10. The installation window will close.

11. Manually close the file explorer window.

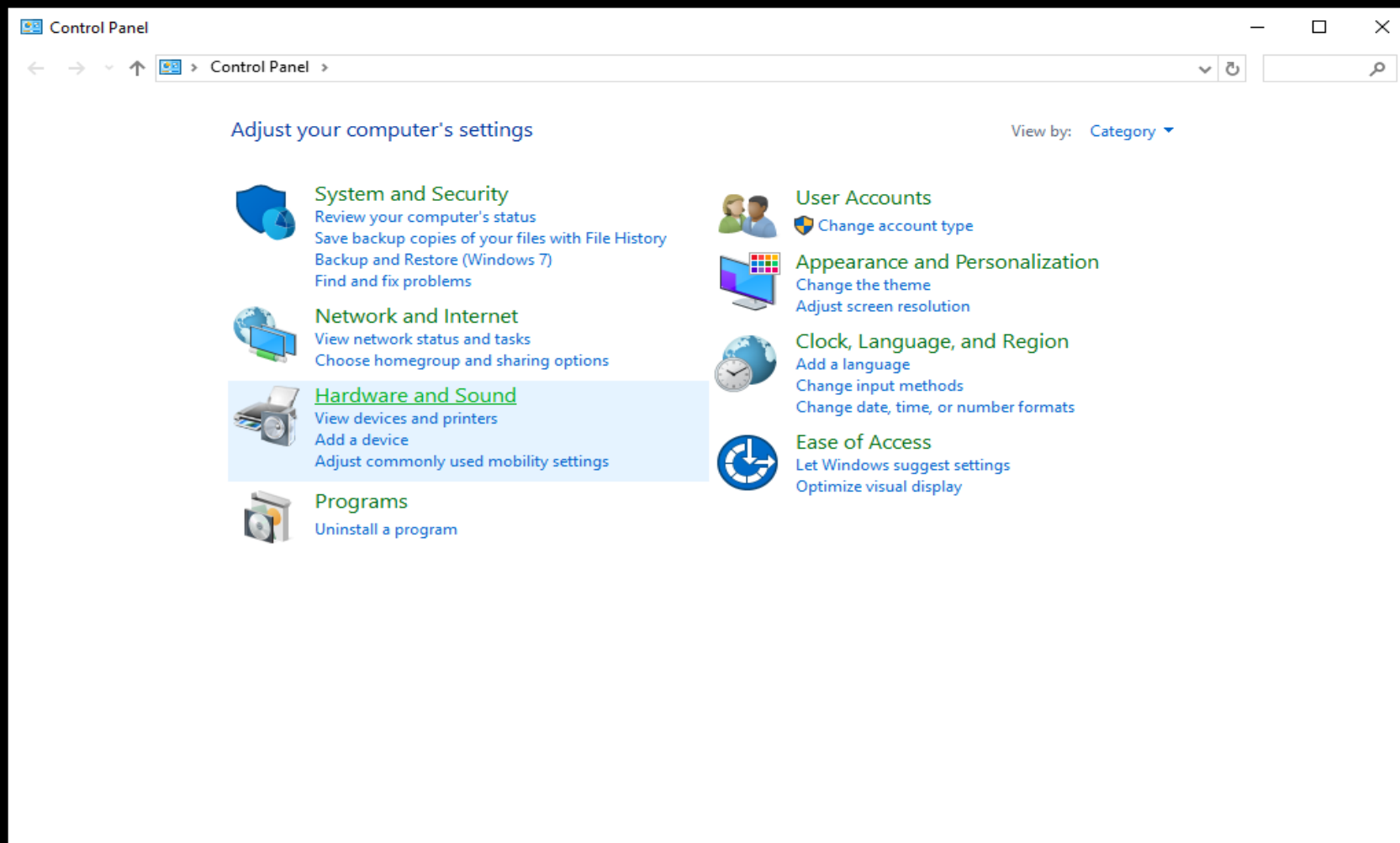




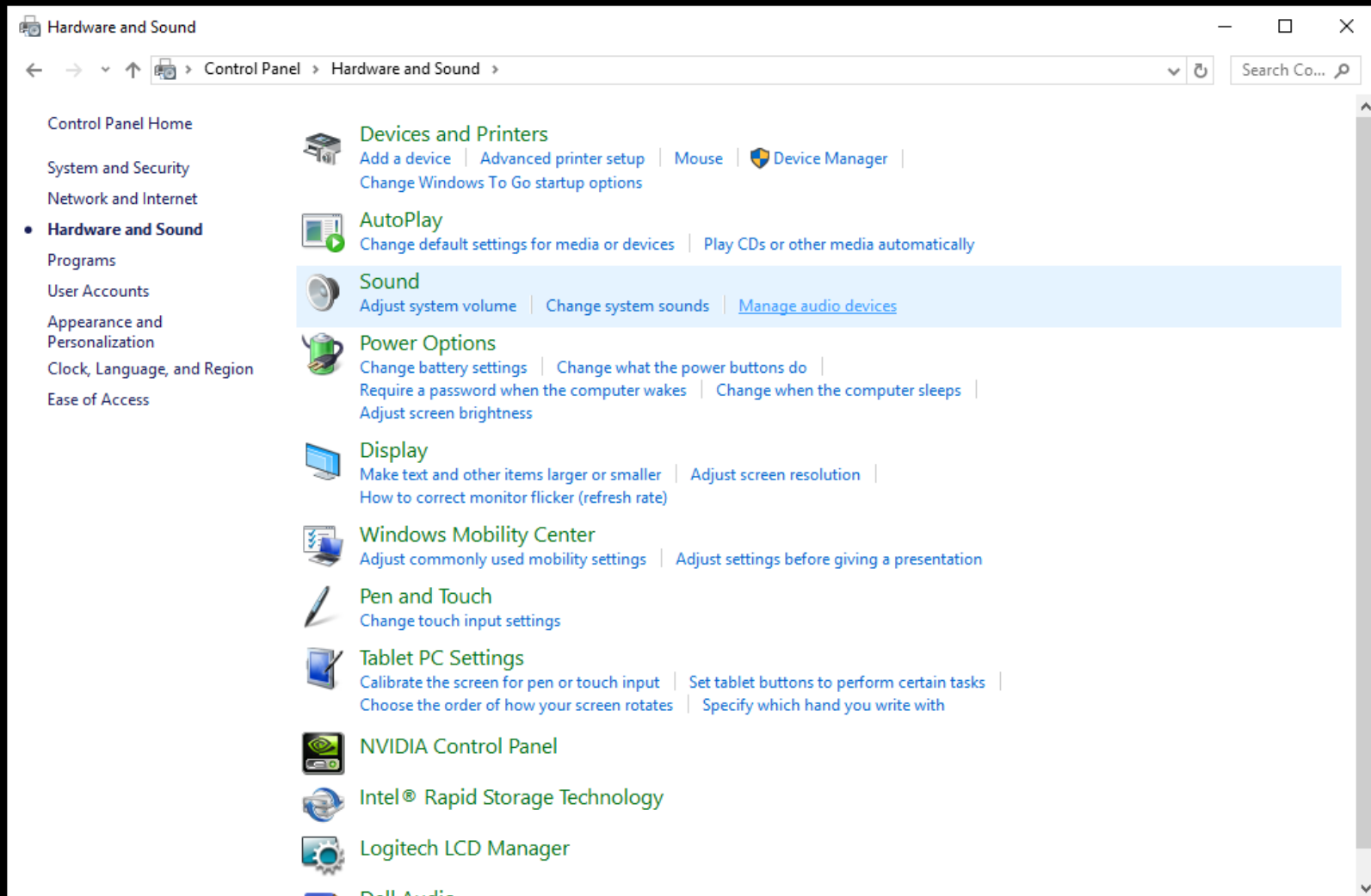
12. Right click on the windows icon in the lower left hand corner to open the command list.

13. Select "Control panel."

14. Select "Hardware and Sound" which should be the third item down on the left

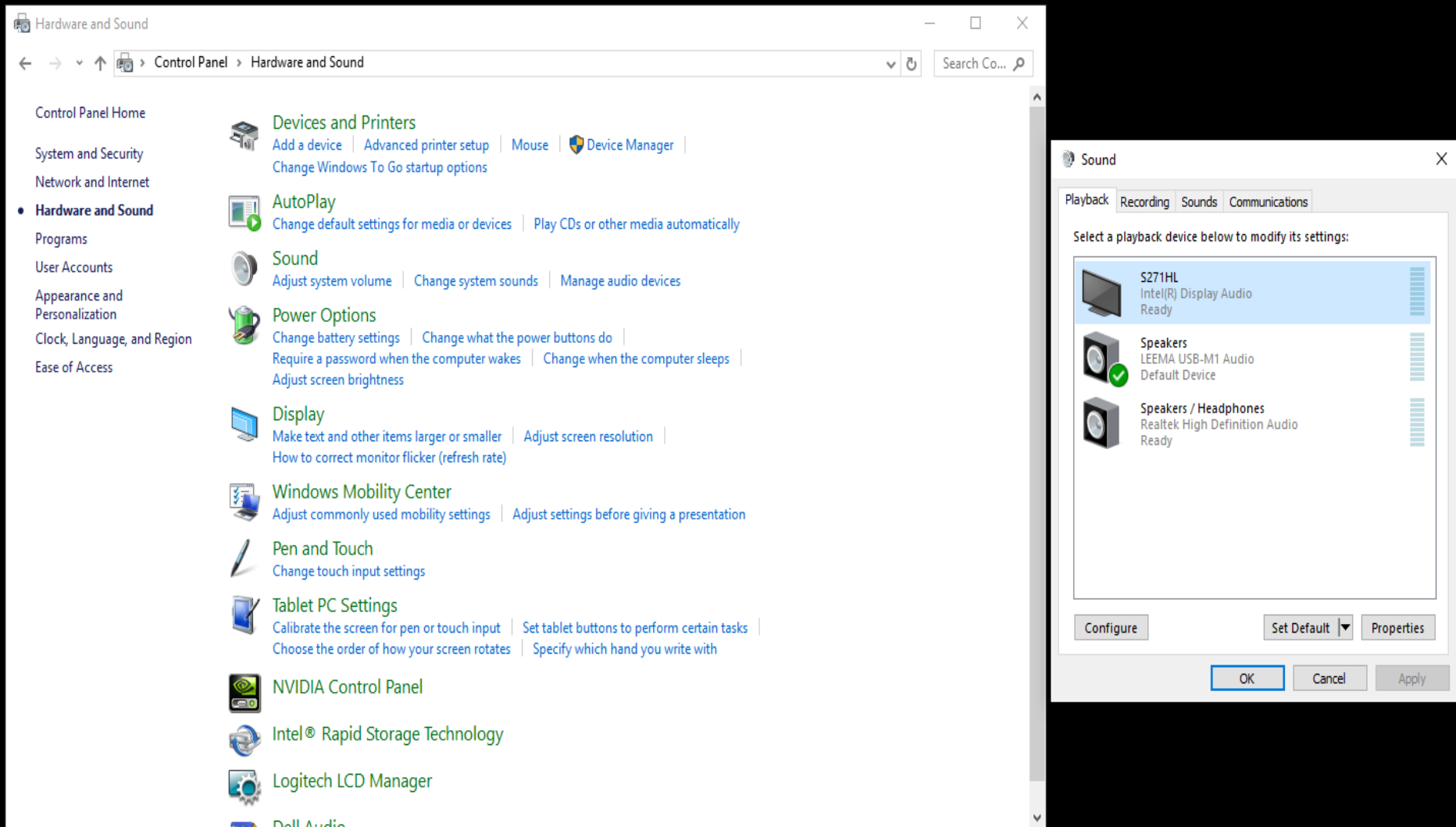


15. Under the "Sound" menu, three items down select "Manage audio devices" on the right hand side as shown.



16. This will bring up the sound device configuration window. The Leema M1 USB audio device should be listed as shown.

17. Select the Leema device then select "Set as Default" . There should now be a green tick over the Leema device icon.

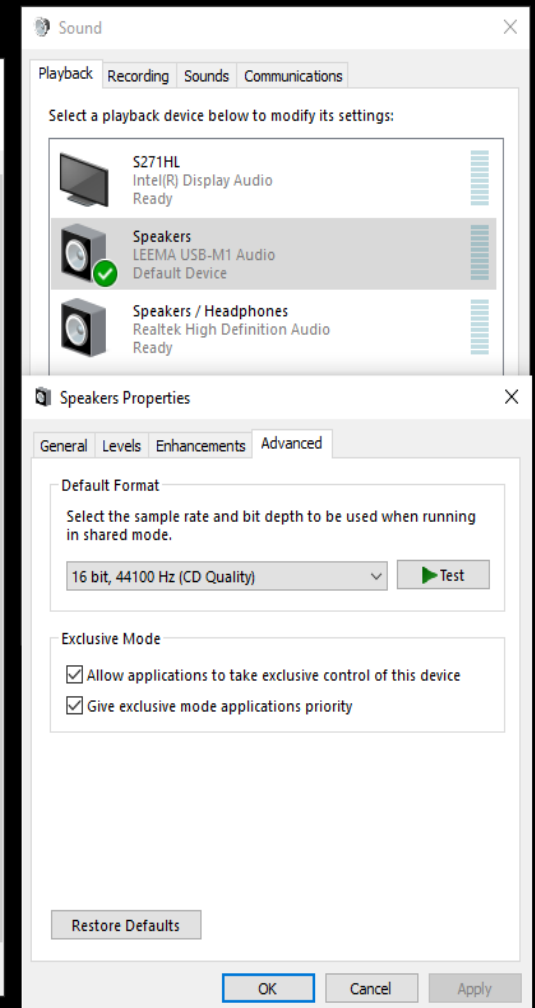
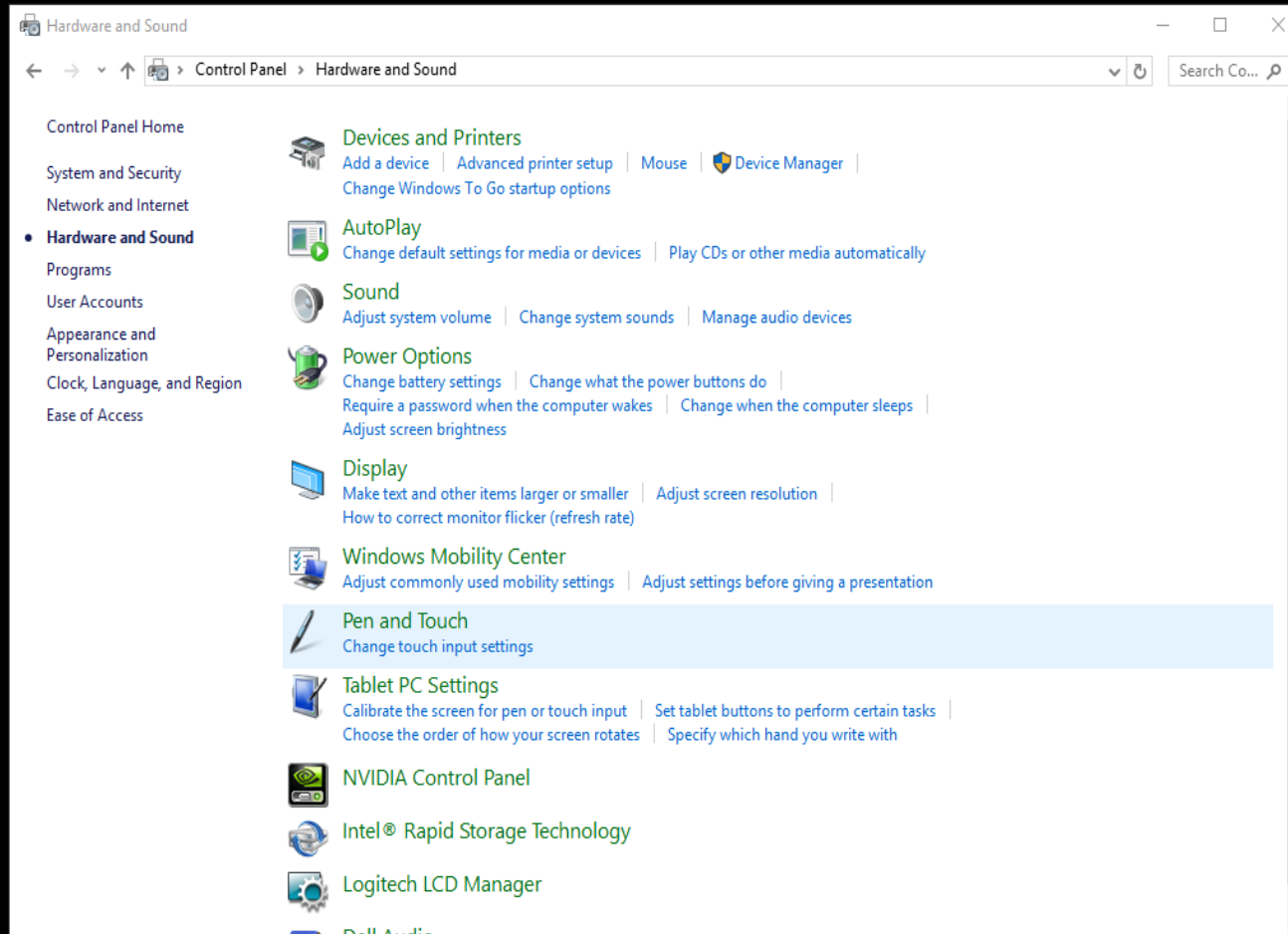




18. Double click on the Leema USB icon to open the properties sub menu.

19. Enable the “Exclusive mode” and “Give Exclusive mode priority” tick boxes. This allows your playback software to vary the replay sample rate and bit depth as required.

20. Select the default sample rate and bit depth for playback software that does not automatically set a rate. This rate will be used as the default and will be up/down sampled by the PC as appropriate. It is best to set an exact multiple of the source sample rate. For instance 44.1 should be upsampled to 88.2 or 176.4 which makes the mathematics for the conversion more accurate.



21. Press “Apply” then OK to close the supplementary menu boxes.

22. Close “Control Panel”.

23. You should now be able to enjoy music played back via your Leema USB device.